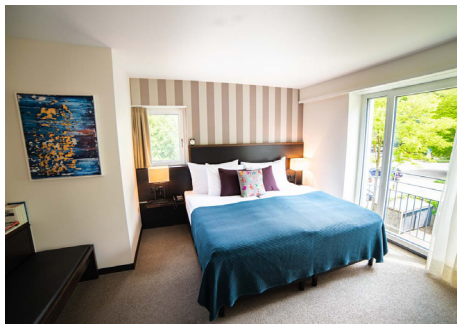


Park Hotel Winterthur


PARK HOTEL
WINTERTHUR **★★★★**



Park Hotel Winterthur ★ ★ ★ ★

www.phwin.ch

Situated in the heart of the historic city of Winterthur, the 4* Park Hotel Winterthur offers the perfect place from which to explore the north-eastern part of Switzerland. With superb public transport connections, the Rhein Falls, Schaffhausen, Appenzell, and Zürich are all in easy reach. The hotel is also home to the superb Bloom restaurant and regularly hosts significant cultural events.

Swiss Tailor Made are proud to partner the Park Hotel Winterthur with our aim being to develop FIT and group business from the UK and USA. In addition to offering the most competitive rates for groups, we also take care of special events and all catering options.

Tour Operators looking to include this hotel in their programmes should get in touch with us via team@swisstailormade.com

Hotel

- Unique location - a footstep away from the old town but surrounded by nature
- Open year-round
- Single, Double and a selection of Suites
- Free minibar & free use of inhouse spa (fitness & sauna)
- Free daily local public transport ticket
- Restaurant and bar with view to the park, regular live music and special culinary events
- Very attractive and negotiable rates for Tour Operators
- "Fläscha Mäntig" – bring your own wine on Mondays!

Winterthur & surroundings

- Historic Winterthur is home to 15 museums
- Zürich Airport is only 15 minutes away by regular direct train service
- Europe's largest waterfalls, the Rhein Falls, are within easy reach
- Historic Appenzell offers a fantastic option for a day trip from Winterthur
- Largest contiguous pedestrian zone in Europe